

Lumen Apartments

RETAIL FOR LEASE

1315 Pacific Avenue Everett, WA 98201

LUMEN
apartments

THE OPPORTUNITY

Situated at the busy lighted intersection of Pacific Avenue and Rucker Avenue in Everett, Washington, the Lumen Apartments is a four story, mixed-use project featuring one remaining first generation ground floor retail suite available for lease that provides an opportunity for outdoor patio seating, soaring 15' ceiling height and on-site retail designated parking stalls. Join existing building retail tenant's Mazatlan Mexican Restaurant and the Everett Clinic. The site is in the heart of growing downtown Everett core positioned just down the street from Funko's new headquarters and the popular Imagine Children's Museum. Approximately 45,000 vehicles travel past this building each day via Rucker Avenue & 16,500 vehicles via Pacific Avenue.



Blake Taylor

(206) 283-5212

www.wccommercialrealty.com

DISCLAIMER: The above information has been secured from sources believed to be reliable, however, no representations are made to its accuracy. Prospective tenants or buyers should consult their professional advisors and conduct their own independent investigation. Site plan and configuration are subject to change. Properties are subject to change in price and/or availability without notice. West Coast Commercial Realty, LLC

WCCR

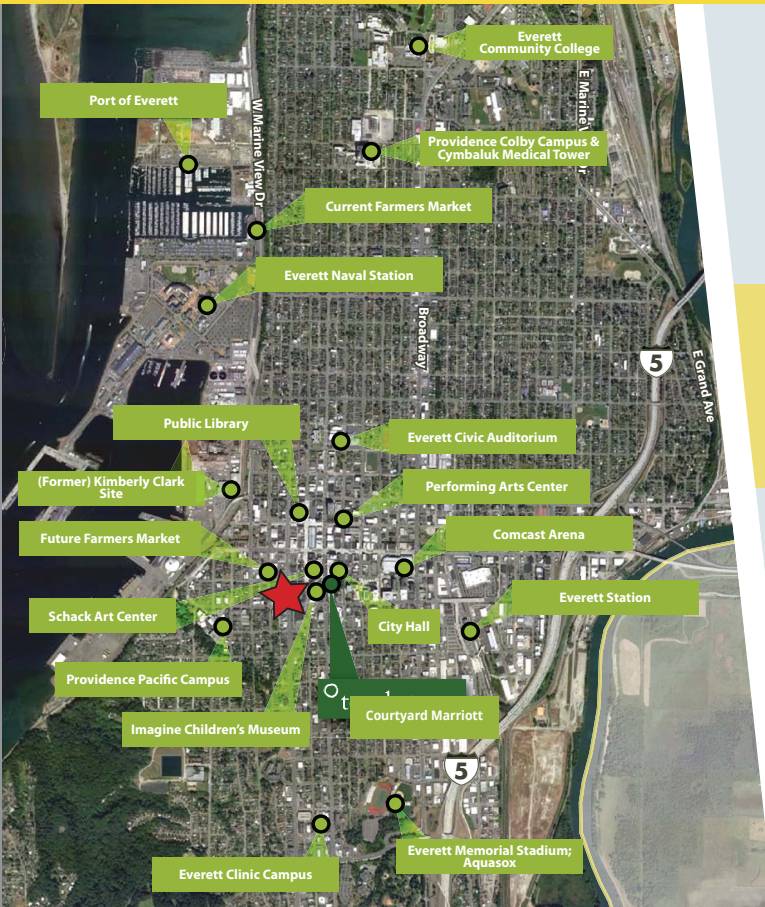
West Coast Commercial Realty

Retail
Commercial
Specialists

Lumen Apartments

RETAIL FOR LEASE

1315 Pacific Avenue Everett, WA 98201



DRIVE TIMES



15 minutes to Marysville



10 minutes to Lake Stevens



45 minutes to Downtown
Seattle



Blake Taylor

(206) 283-5212

www.wccommercialrealty.com

WCCR

West Coast Commercial Realty

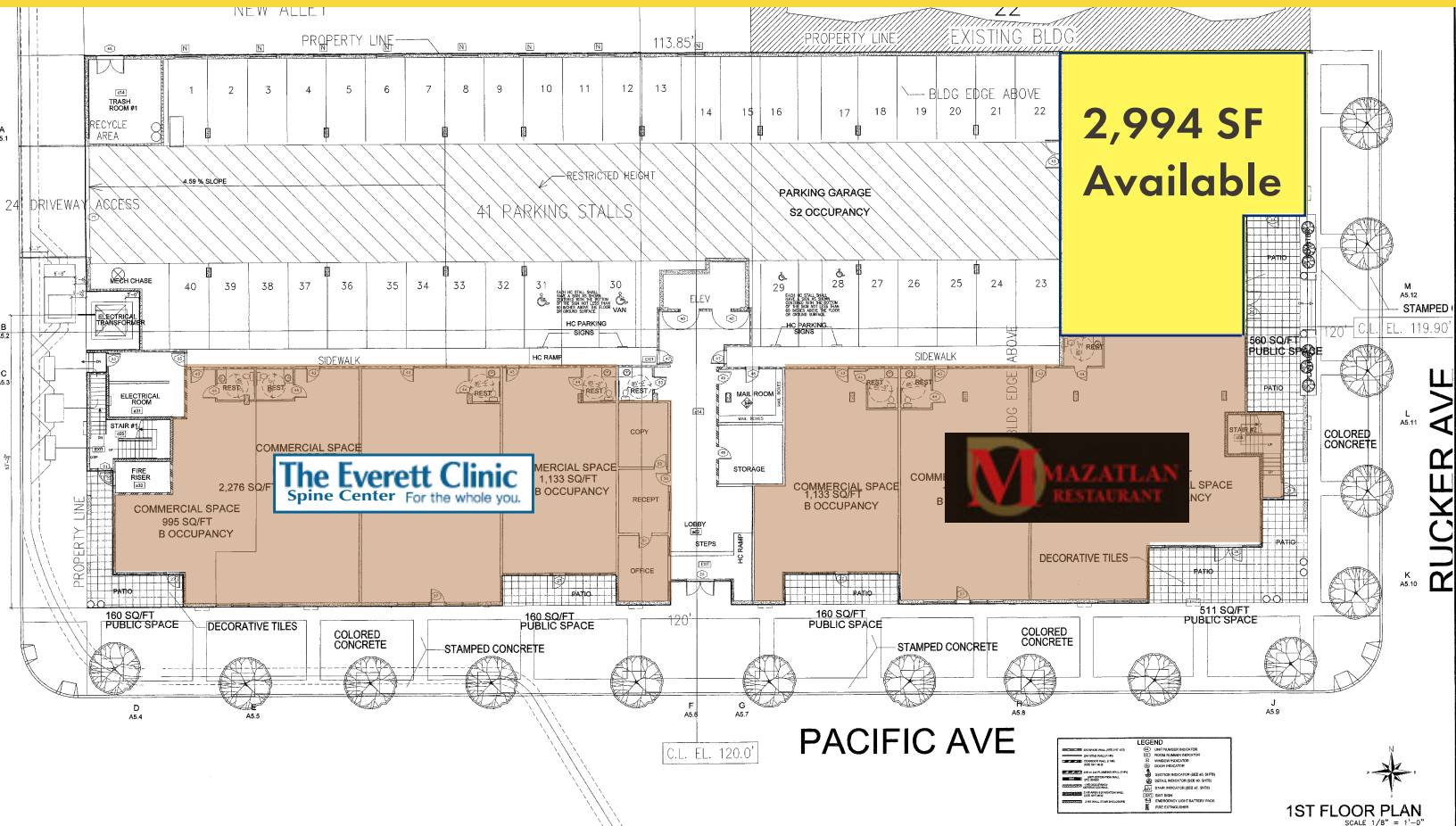
Retail
Commercial
Specialists

DISCLAIMER: The above information has been secured from sources believed to be reliable, however, no representations are made to its accuracy. Prospective tenants or buyers should consult their professional advisors and conduct their own independent investigation. Site plan and configuration are subject to change. Properties are subject to change in price and/or availability without notice. West Coast Commercial Realty, LLC

Lumen Apartments

RETAIL FOR LEASE

1315 Pacific Avenue Everett, WA 98201



Blake Taylor

(206) 283-5212

www.wccommercialrealty.com

WCCR

West Coast Commercial Realty

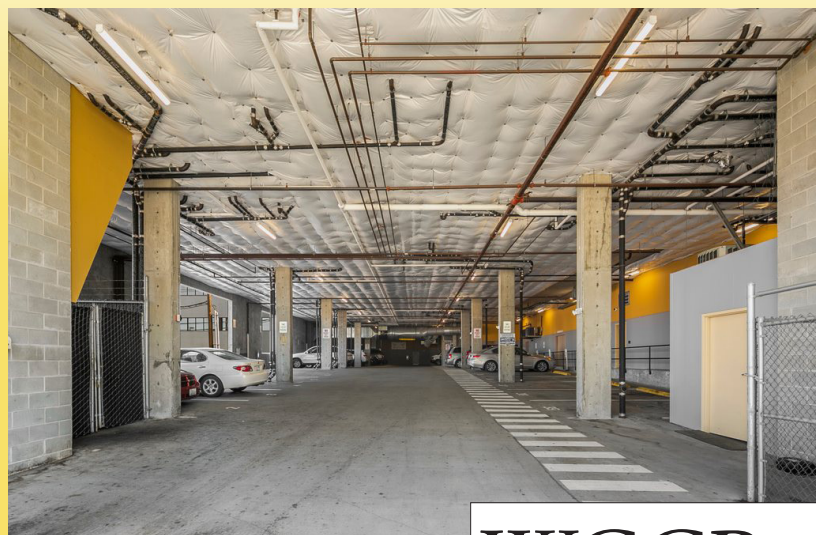
Retail
Commercial
Specialists

DISCLAIMER: The above information has been secured from sources believed to be reliable, however, no representations are made to its accuracy. Prospective tenants or buyers should consult their professional advisors and conduct their own independent investigation. Site plan and configuration are subject to change. Properties are subject to change in price and/or availability without notice. West Coast Commercial Realty, LLC

Lumen Apartments

RETAIL FOR LEASE

1315 Pacific Avenue Everett, WA 98201



Blake Taylor

(206) 283-5212
www.wccommercialrealty.com

WCCR
West Coast Commercial Realty
Retail
Commercial
Specialists

DISCLAIMER: The above information has been secured from sources believed to be reliable, however, no representations are made to its accuracy. Prospective tenants or buyers should consult their professional advisors and conduct their own independent investigation. Site plan and configuration are subject to change. Properties are subject to change in price and/or availability without notice. West Coast Commercial Realty, LLC