



SHORELINE OFFICE @ 19909

19909 Ballinger Way NE • Shoreline, WA 98155

BUILDING FEATURES

- **4,115 RSF** stand-alone Available
2,057 RSF per floor, identical footprint
- Existing Law Firm build out
- Large parking lot (47 stalls)
- Easy I-5 access, half mile to King/Snohomish Counties
- Existing office tenants in the complex include Shoreline Dental, Staton Silber, P.S., Badgley Mullins Turner, PLLC, Spain Orthodontics



WestCoast
Commercial

R E A L T Y

For more information call:
(206) 283-5212

Retail Commercial Specialists



Blake Taylor

2101 Fourth Avenue, Suite 920 - Seattle, WA 98121

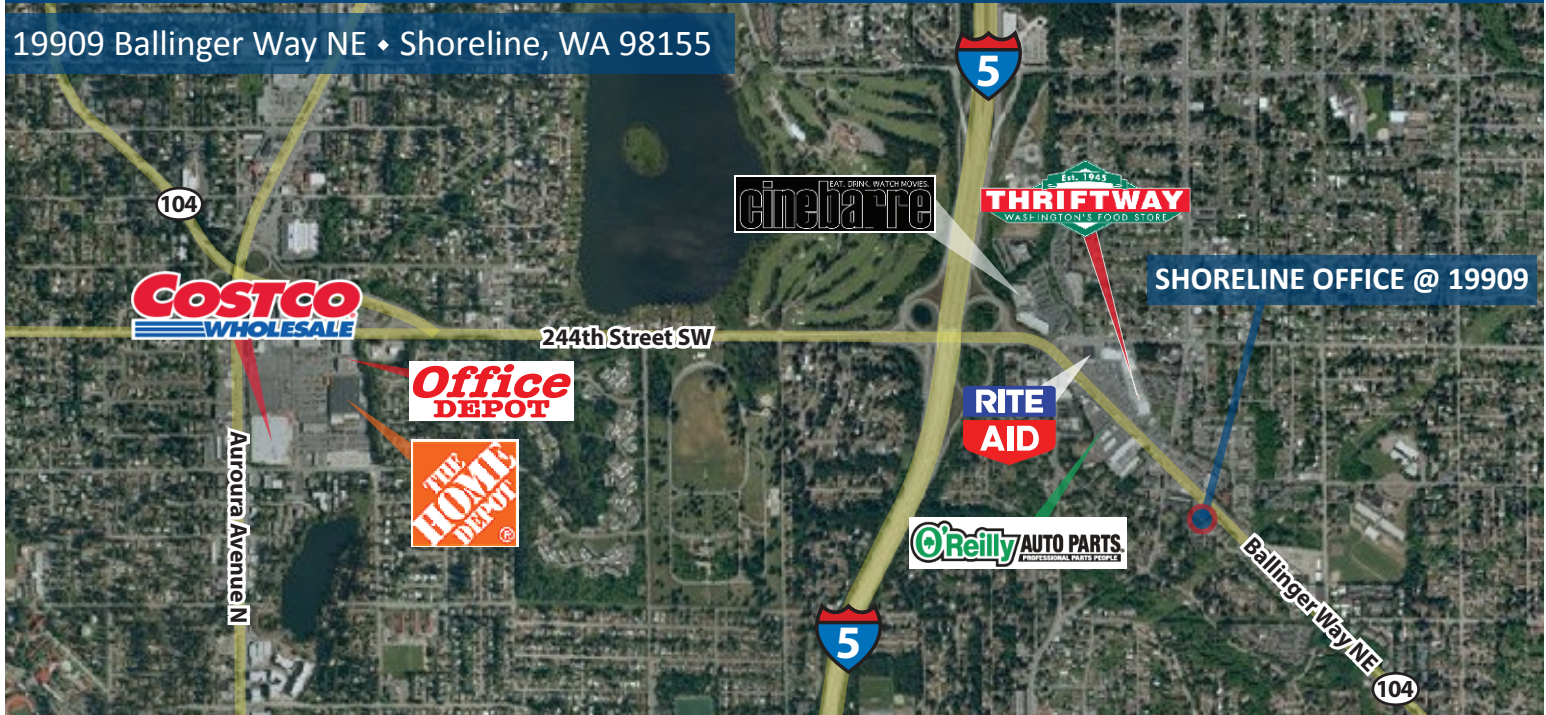
[www. wccommercialrealty.com](http://www.wccommercialrealty.com)

DISCLAIMER: The above information has been secured from sources believed to be reliable, however, no representations are made to its accuracy. Prospective tenants or buyers should consult their professional advisors and conduct their own independent investigation. Site plan and configuration are subject to change. Properties are subject to change in price and/or availability without notice. West Coast Commercial Realty, LLC



SHORELINE OFFICE @ 19909

19909 Ballinger Way NE • Shoreline, WA 98155



AVAILABLE SPACE

Floor/suite	RSF	Availability
19909 (entire bldg.)	4,115	August 1, 2018



WestCoast
Commercial
REALTY

For more information call:
(206) 283-5212

Retail Commercial Specialists



Blake Taylor
2101 Fourth Avenue, Suite 920 - Seattle, WA 98121
www.wccommercialrealty.com

DISCLAIMER: The above information has been secured from sources believed to be reliable, however, no representations are made to its accuracy. Prospective tenants or buyers should consult their professional advisors and conduct their own independent investigation. Site plan and configuration are subject to change. Properties are subject to change in price and/or availability without notice. West Coast Commercial Realty, LLC

CxStar
POWER BROKER
2014 Top Firm Award

CBA **COMMERCIAL BROKERS**
ASSOCIATION

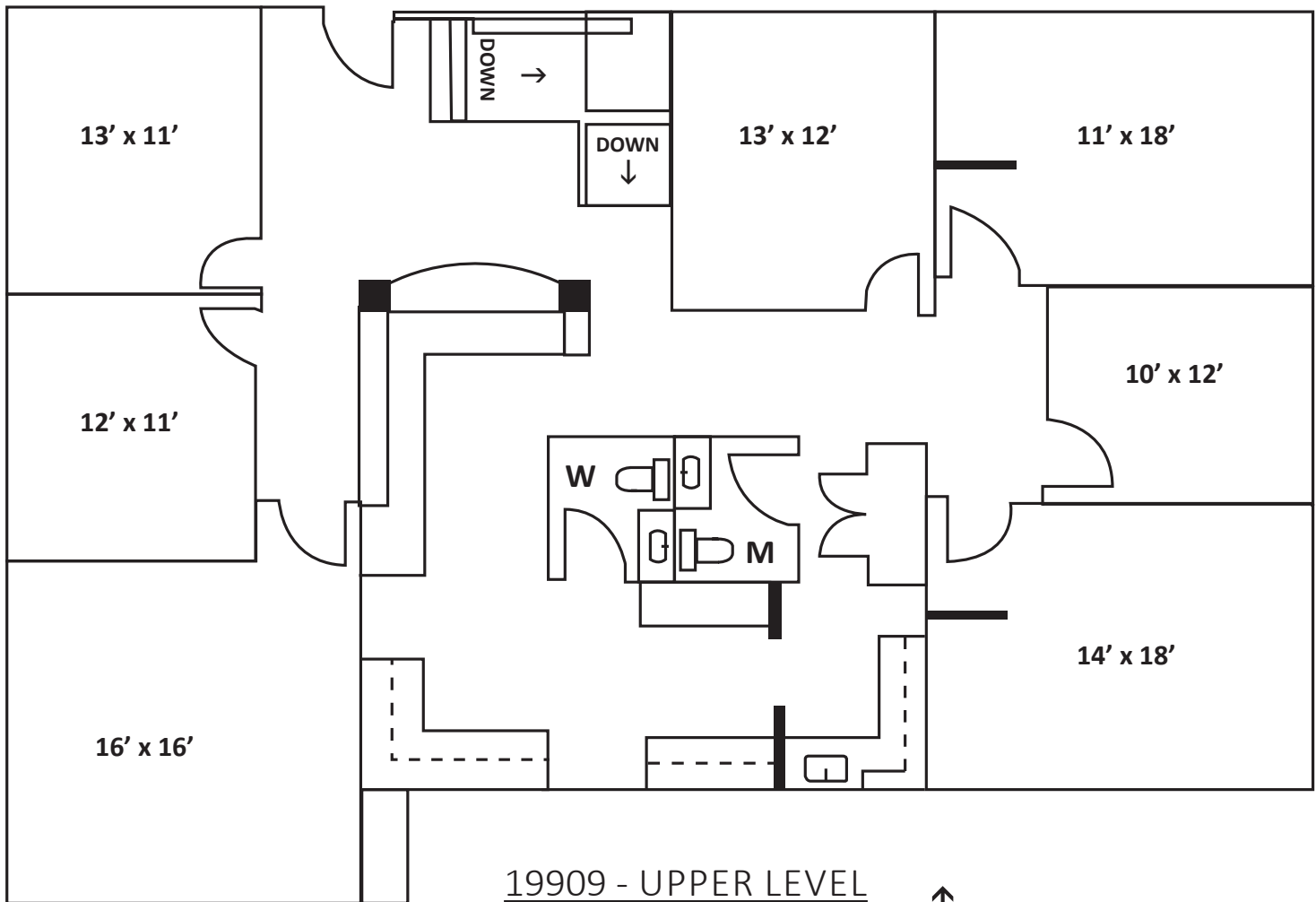
ICSC
International Council of Shopping Centers

SHORELINE OFFICE @ 19909

19909 Ballinger Way NE • Shoreline, WA 98155

FLOOR PLAN - Upper Level

2,057 RSF (4,115 RSF total building)



19909 - UPPER LEVEL

Approximately SF = 2,057



WestCoast
Commercial
R E A L T Y

For more information call:
(206) 283-5212

Retail Commercial Specialists



Blake Taylor
2101 Fourth Avenue, Suite 920 - Seattle, WA 98121
www.wccommercialrealty.com

DISCLAIMER: The above information has been secured from sources believed to be reliable, however, no representations are made to its accuracy. Prospective tenants or buyers should consult their professional advisors and conduct their own independent investigation. Site plan and configuration are subject to change. Properties are subject to change in price and/or availability without notice. West Coast Commercial Realty, LLC

CoStar
POWERBROKER
2014 Top Firm Award

CBA **COMMERCIAL BROKERS**
ASSOCIATION

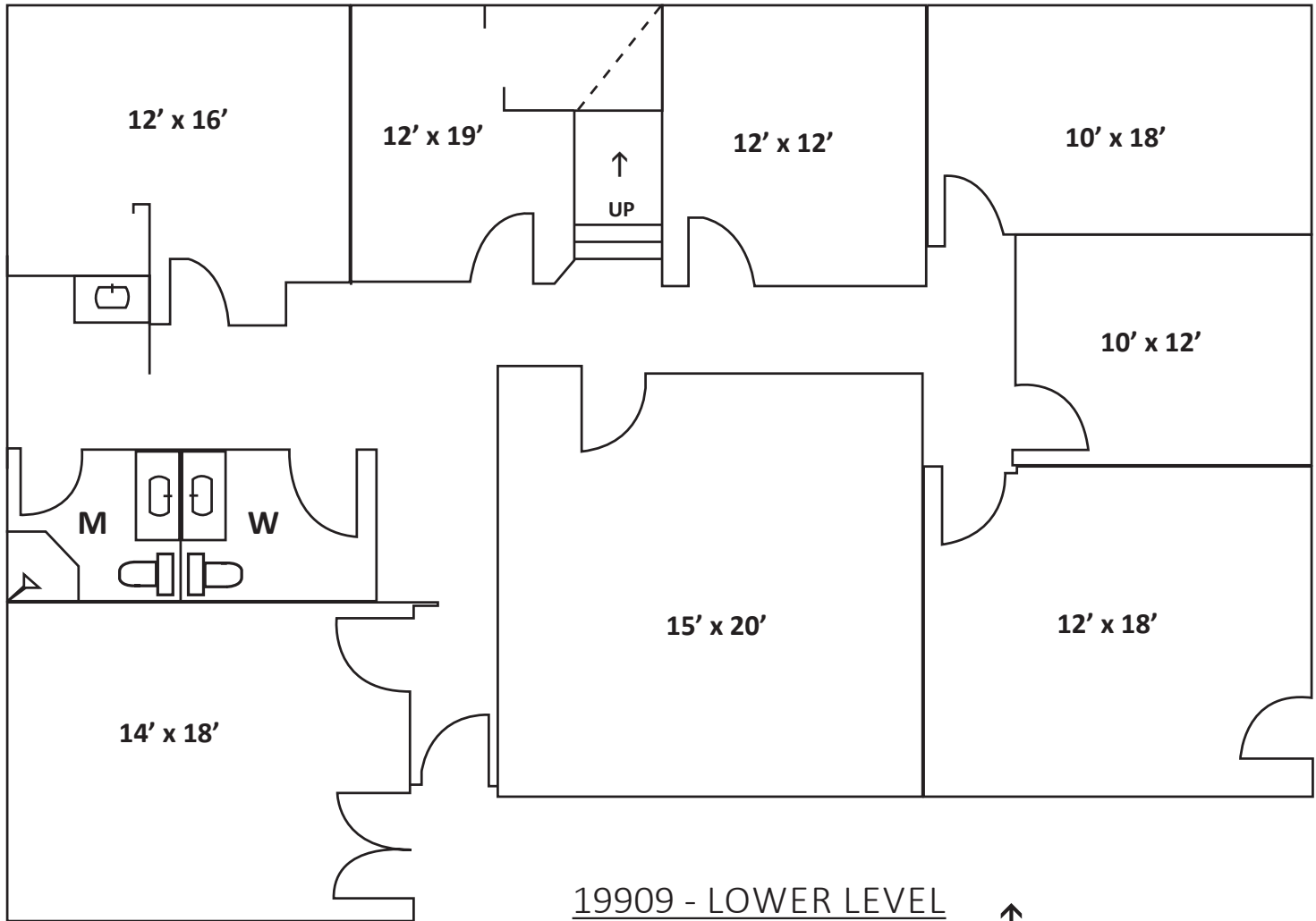
ICSC
International Council of Shopping Centers

SHORELINE OFFICE @ 19909

19909 Ballinger Way NE • Shoreline, WA 98155

FLOOR PLAN - Lower Level

2,057 RSF (4,115 RSF total building)



19909 - LOWER LEVEL

Approximately SF = 2,057



WestCoast
Commercial
REALTY

For more information call:
(206) 283-5212

Retail Commercial Specialists



Blake Taylor

2101 Fourth Avenue, Suite 920 - Seattle, WA 98121

www.wccommercialrealty.com

DISCLAIMER: The above information has been secured from sources believed to be reliable, however, no representations are made to its accuracy. Prospective tenants or buyers should consult their professional advisors and conduct their own independent investigation. Site plan and configuration are subject to change. Properties are subject to change in price and/or availability without notice. West Coast Commercial Realty, LLC

