

EVERETT RESTAURANT/RETAIL

Courtyard by Marriott ♦ 3003 COLBY AVE, EVERETT, WA 98201

a new development by  touchstone



Announcing — Everett Courtyard by Marriott Restaurant / Retail

The Everett Marriott Courtyard is a new development in the heart of Downtown Everett's business and retail core. Located on the SE corner of the lighted intersection at Colby Avenue and Wall Street, the project offers rare street level restaurant and/or retail space(s) below a new 156-room Marriott hotel. Scheduled for a Q2 2016 completion, the project is currently under construction and will help fill the growing demand from increased business and leisure travelers along the Interstate 5 corridor. The north end cap will provide a first generation opportunity for a full service restaurant to occupy all or a portion of the highly visible space.

The site is located in a growing and dynamic downtown commercial core. From the new year-round indoor farmer's market, to half-a-dozen new mixed-use apartment developments, both are adding to the growth of the downtown population, currently boasting a combined total of almost **37,000 employees and residents** within a one mile radius. Everett has grown from a primarily industrial mill town to an active, diverse and vibrant metropolitan area that provides residents with a reason to stay and visitors a reason to come. For those seeking an active urban lifestyle within Snohomish County, it's all in Downtown Everett.

WestCoast
Commercial

R E A L T Y

For more information call:
(206) 283-5212

Retail Commercial Specialists



Blake Taylor ♦ Tiffini Connell
2101 Fourth Avenue, Suite 920 - Seattle, WA 98121
www.wccommercialrealty.com

DISCLAIMER: The above information has been secured from sources believed to be reliable, however, no representations are made to its accuracy. Prospective tenants or buyers should consult their professional advisors and conduct their own independent investigation. Site plan and configuration are subject to change. Properties are subject to change in price and/or availability without notice. West Coast Commercial Realty, LLC

CoStar
POWERBROKER
2016 Top Broker Award

CoStar
POWERBROKER
2014 Top Firm Award

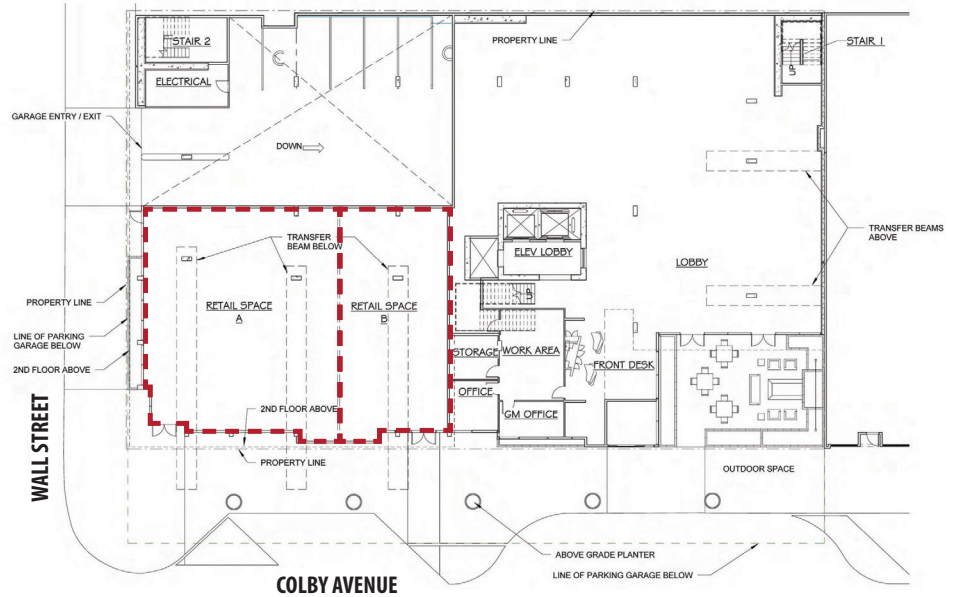
CBA **COMMERCIAL BROKERS**
ASSOCIATION

ICSC
International Council of Shopping Centers

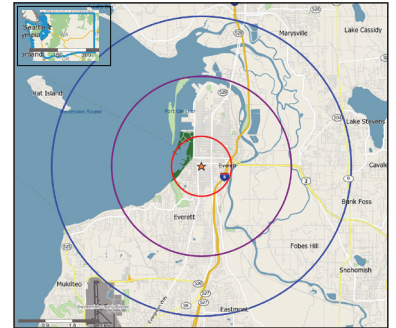
EVERETT RESTAURANT/RETAIL

Courtyard by Marriott ♦ 3003 COLBY AVE, EVERETT, WA 98201

- 156 room Marriott Courtyard - World's largest and strongest select-service hotel brand.
- Highly visible 4,311 sf (divisible) street-level corner restaurant or retail space available on the SE corner of Colby Avenue and Wall Street.
- 2.5 blocks to Comcast Arena, adjacent to the City of Everett and Snohomish County Governmental administrative offices and Snohomish County Superior Court.



**+/- 4,311 SF
AVAILABLE
(will divide)**



DEMOGRAPHICS

POPULATION		AVG HOUSEHOLD INCOME	
1 Mile:	15,525	1 Mile:	\$52,893
2 Mile:	34,986	2 Mile:	\$57,762
3 Mile:	52,409	3 Mile:	\$61,865
5 Mile:	111,934	5 Mile:	\$68,115

**WestCoast
Commercial**

For more information call:
(206) 283-5212

R E A L T Y

Retail Commercial Specialists



Blake Taylor ♦ Tiffini Connell

2101 Fourth Avenue, Suite 920 - Seattle, WA 98121

www.wccommercialrealty.com

DISCLAIMER: The above information has been secured from sources believed to be reliable, however, no representations are made to its accuracy. Prospective tenants or buyers should consult their professional advisors and conduct their own independent investigation. Site plan and configuration are subject to change. Properties are subject to change in price and/or availability without notice. West Coast Commercial Realty, LLC

