

For Sale - Unique Industrial Villa

Special, Once-in-a-Generation Commercial Property

1100 NW 52nd Street,
Seattle, WA 98107



Location | Design | Multi-Use | Creative

Frelard — “Recognized by Time and Lonely Planet as one of the top neighborhoods in the world.” The Culture Trip, 2017

An historic Seattle neighborhood that serves as the epicenter of artisan breweries, residents, artist lofts, bicycles, healing centers, creative office space and unique, independent restaurants. Less than 4 miles from downtown Seattle, proudly positioned between booming Ballard and Fremont, this North Seattle location is easily accessible from all urban enclaves around the city. Custom built from the ground up in 2005, this multi-use building has office, public, studio and design space in addition to shop, storage and an artist loft living space. Grand courtyard, secure on all sides, peaceful treetop views, mature custom landscaping, quality, high-end design materials — this is a must-see treasure.

Land: +/- 5,000 SF

Multi-Story Building: +/- 4,888 SF

Zoning: IB U/45



Tiffini Connell
(206) 283-5212
www.wccommercialrealty.com



Joy A. Roush
425-681-1382
joy@windermere.com

DISCLAIMER: The above information has been secured from sources believed to be reliable, however, no representations are made to its accuracy. Prospective tenants or buyers should consult their professional advisors and conduct their own independent investigation. Site plan and configuration are subject to change. Properties are subject to change in price and/or availability without notice. West Coast Commercial Realty, LLC

For Sale - Unique Industrial Villa

Special, Once-in-a-Generation Commercial Property

1100 NW 52nd Street,
Seattle, WA 98107

POTENTIAL VISIONS FOR A NEW OWNER:

- TEST OR INSTRUCTIONAL KITCHEN FOR COOKING CLASSES
- COOKING AND LIFESTYLE COMMERCIAL VIDEO AND PHOTOGRAPHY PRODUCTION STUDIO
- BREWERY OR TAP ROOM WITH UNIQUE EVENT SPACE
- SPECIAL EVENT SPACE WITH BREAK OUT ROOMS AND LECTURE AREAS
- PRIVATE, CREATIVE OFFICE SPACE FOR START UPS OR WELL-ESTABLISHED BUSINESSES AND FOUNDATIONS
- HEALING ARTS CENTER
- ART STUDIO WITH SPECIAL EVENT SPACE
- LONG-TERM HOLD AND/OR FUTURE REDEVELOPMENT



CBA ICSC POWERBROKER
2018 Top Broker Award

WCCR
West Coast Commercial Realty

Tiffini Connell
(206) 283-5212
www.wccommercialrealty.com

Windermere
REAL ESTATE

Joy A. Roush
425-681-1382
joy@windermere.com

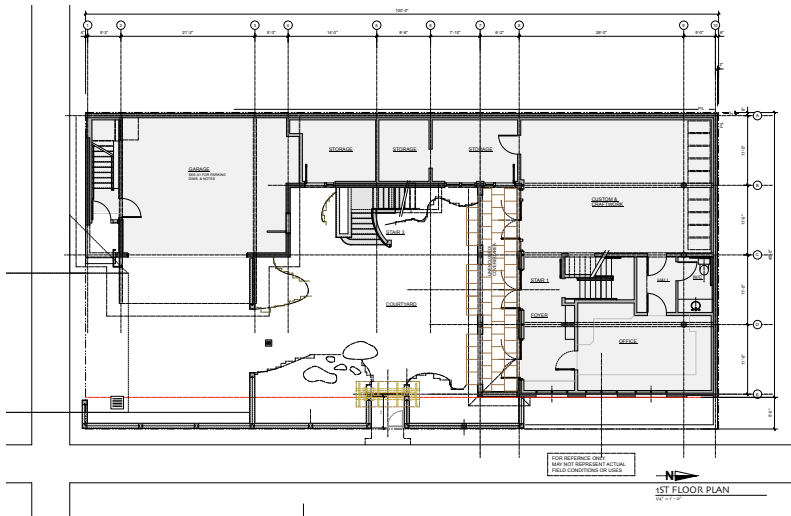
DISCLAIMER: The above information has been secured from sources believed to be reliable, however, no representations are made to its accuracy. Prospective tenants or buyers should consult their professional advisors and conduct their own independent investigation. Site plan and configuration are subject to change. Properties are subject to change in price and/or availability without notice. West Coast Commercial Realty, LLC

For Sale - Unique Industrial Villa

Special, Once-in-a-Generation Commercial Property

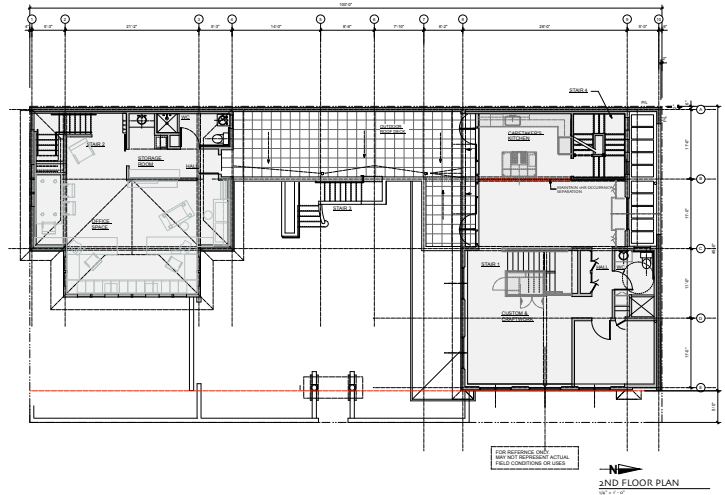
1100 NW 52nd Street,
Seattle, WA 98107

SITE PLAN

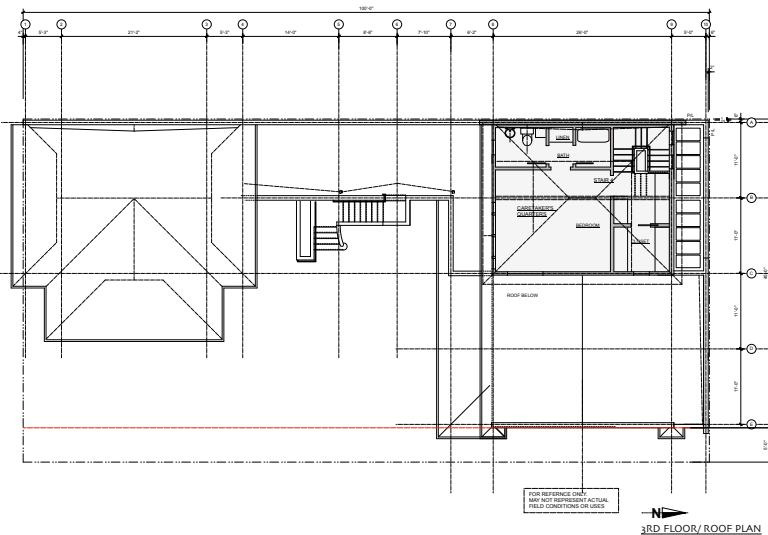


← First Floor

Second Floor →



← Third Floor



WCCR
West Coast Commercial Realty

Tiffini Connell
(206) 283-5212
www.wccommercialrealty.com

Windermere
REAL ESTATE

Joy A. Roush
425-681-1382
joy@windermere.com

DISCLAIMER: The above information has been secured from sources believed to be reliable, however, no representations are made to its accuracy. Prospective tenants or buyers should consult their professional advisors and conduct their own independent investigation. Site plan and configuration are subject to change. Properties are subject to change in price and/or availability without notice. West Coast Commercial Realty, LLC

For Sale - Unique Industrial Villa

Special, Once-in-a-Generation Commercial Property

1100 NW 52nd Street,
Seattle, WA 98107

Paul Aiello, Architect: "The building was designed as modules, each representing distinct uses. The mass of the building is placed to the perimeter of the lot, creating a courtyard that gives a cohesive common ground. The lower courtyard garden spaces flow, at grade, from photography studios and offices of the main building wing. An open-air second floor balcony spans the western edge of the complex connecting the main wing to the office/garage wing of the building. "



WCCR
West Coast Commercial Realty

Tiffini Connell
(206) 283-5212
www.wccommercialrealty.com

Windermere
REAL ESTATE

Joy A. Roush
425-681-1382
joy@windermere.com

DISCLAIMER: The above information has been secured from sources believed to be reliable, however, no representations are made to its accuracy. Prospective tenants or buyers should consult their professional advisors and conduct their own independent investigation. Site plan and configuration are subject to change. Properties are subject to change in price and/or availability without notice. West Coast Commercial Realty, LLC

For Sale - Unique Industrial Villa

Special, Once-in-a-Generation Commercial Property

1100 NW 52nd Street,
Seattle, WA 98107



WCCR
West Coast Commercial Realty

Tiffini Connell
(206) 283-5212
www.wccommercialrealty.com

Windermere
REAL ESTATE

Joy A. Roush
425-681-1382
joy@windermere.com

DISCLAIMER: The above information has been secured from sources believed to be reliable, however, no representations are made to its accuracy. Prospective tenants or buyers should consult their professional advisors and conduct their own independent investigation. Site plan and configuration are subject to change. Properties are subject to change in price and/or availability without notice. West Coast Commercial Realty, LLC